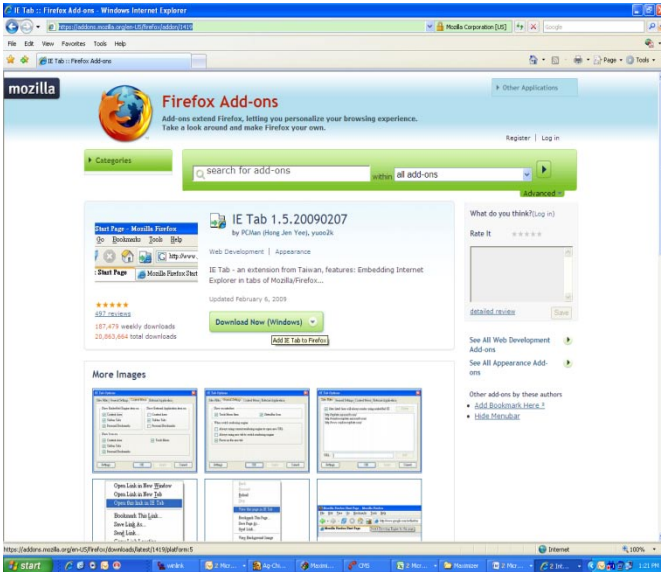


IMPORTANT INFORMATION ABOUT USING FIREFOX TO BROWSE AG-CHIEVE'S ONLINE RESOURCE CENTRE



Firefox 3.0 has a free Internet Explorer add-on that will allow you to browse our Online Resource Center using Firefox.

To download the add-on go to;

<https://addons.mozilla.org/en-US/firefox/addon/1419>

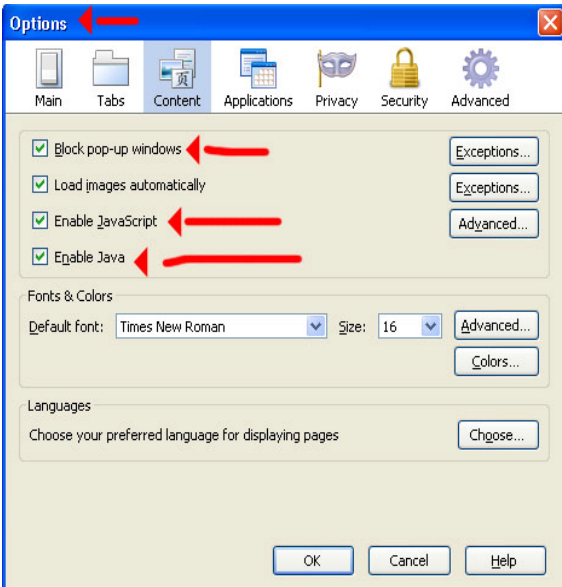
Click on the green "Download Now" tab halfway down the page to install the IE add on your Firefox browser.

Once you have downloaded the add-on, click the link below to go to Ag-Chieve's online resource center.

<http://mail.ag-chieve.ca/members/>

Then right-click anywhere on the page. You'll see a box popup. Select "View page in IE tab". You will then be able to type in your user name and password and enter the resource center using Firefox.

ADDITIONAL INFO ABOUT USING THE RESOURCE CENTRE



- The area is designed for use with IE Explorer for a screen resolution of 1024 x 768
- You need to have Flash installed, java script up-to-date & enabled, as well as allowing cookies & pop-ups
- Your privacy setting should be set to 'medium'

Most of the above settings can be adjusted within your browser by clicking on Tools > Internet Options and then clicking through the row of tabs at the top of the window that pops up. A reference image of these settings is included below.

Once you've logged in the first time you can add the site to your 'Favorites', or create a short cut to the site on your desktop by right clicking on a page and selecting 'Create Desktop Shortcut'.

You can also access the resource center anytime from a tab on the top left side of our public web site located at www.ag-chieve.ca. Just click on it and log in with your user id & pw below. Call 1-888-274-3138 if you require further assistance.